



**SUBARU**

Industrial Power Products

# **PARTS MANUAL**

**Model**

# **RGX2900 50 STATE GENERATORS**

PUB-EP6483

Rev. 09/12

Subaru Industrial Power Products

905 Telser Road • Lake Zurich, IL 60047 • Phone: 847-540-7300 • Fax: 847-438-5012  
e-mail: [sales@subarupower.com](mailto:sales@subarupower.com) • [www.subarupower.com](http://www.subarupower.com)

© Copyright 2012

# GROUP INDEX

<b>Group Name</b>	<b>Page</b>
CRANKCASE GROUP .....	4
CRANKSHAFT GROUP .....	8
INTAKE and EXHAUST GROUP .....	10
GOVERNOR GROUP .....	14
COOLING and STARTING GROUP .....	16
FUEL, LUBRICATION GROUP .....	18
ELECTRIC.....	22

**FIG. 1 CRANKCASE GROUP**

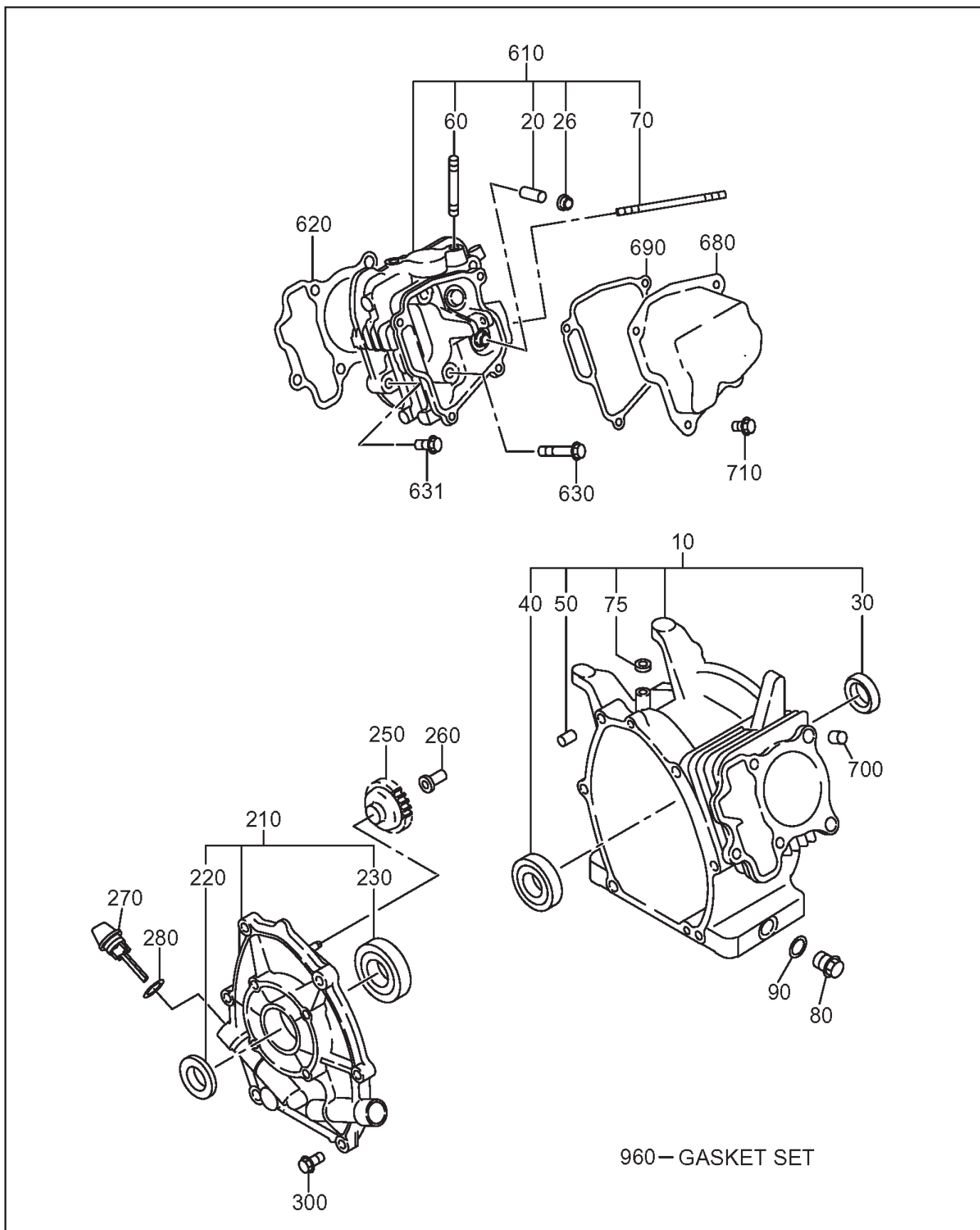
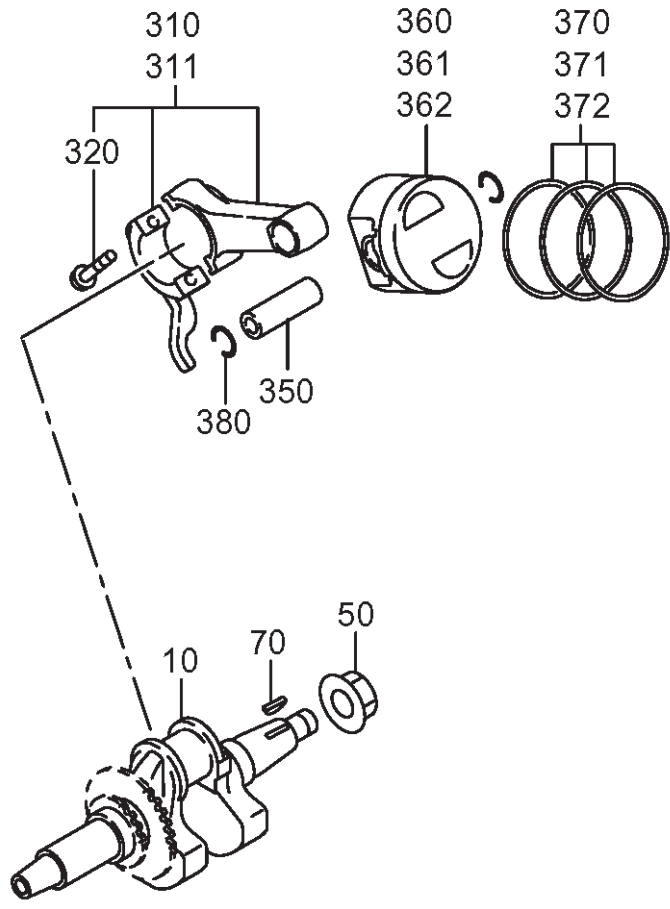


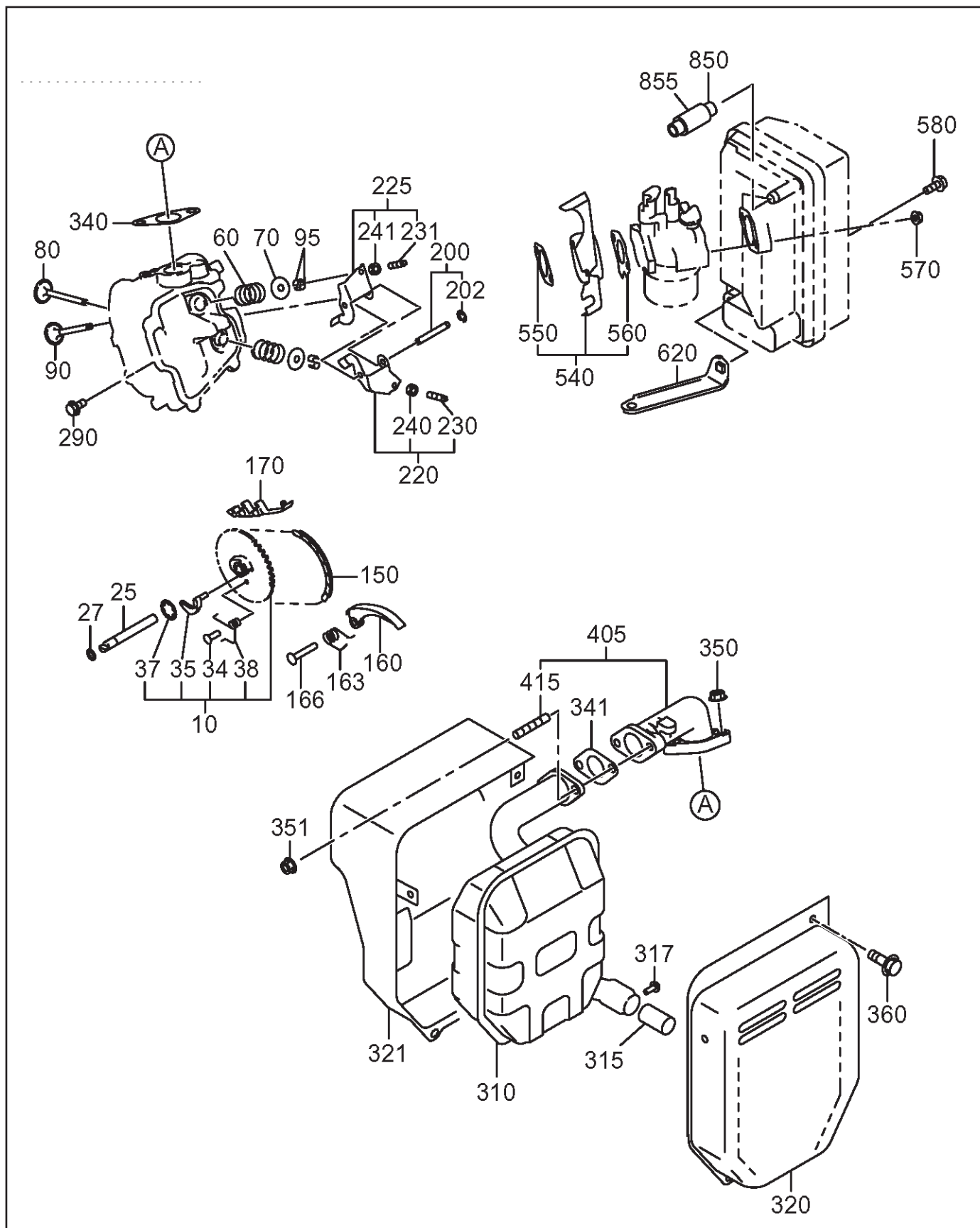


FIG. 2 CRANKSHAFT GROUP





**FIG. 3 INTAKE and EXHAUST GROUP**





**FIG. 3 INTAKE and EXHAUST GROUP**

Ref.	Part Number	Description	Qty	Remarks	To-From	Fig.
10	278-31601-31	CAM SHAFT CP	1	85DX2.9B N=40		301
25	277-35101-03	PIN(CAM SHAFT)	1	9DX78.5L		301
27	024-00600-10	O RING	1	5.8DX9.6D		301
34	277-38601-03	PIN(SPRING)	1	4DX8DX9L		301
35	277-36401-03	RELEASE LEVER	1			301
37	277-36501-03	CLIP	1	13.8DX20.3DX0.4T		301
38	279-38701-13	RETURN SPRING	1	5.3DX0.6DX5.5L N=5.7		301
60	279-33601-03	VALVE SPRING	2	19.2DX2.3DX27.4L		301
70	269-33701-03	SPRING RETAINER	2			301
80	277-33401-H3	INTAKE VALVE	1	25.5DX5.5DX68.1L		301
90	277-33501-H3	EXHAUST VALVE	1	23.5DX5.5DX68.1L		301
95	132-10KA0-31	COLLET-VALVE	4			301
150	277-35601-11	TIMING CHAIN CP	1	88 LINK		301
160	277-36911-03	TENTIONER	1			301
163	277-37101-03	SPRING(TENTIONER)	1	10DX1.8DX14L N=4.5		301
166	277-36902-03	PIN(TENTIONER)	1	6DX13DX34L		301
170	277-36913-13	CHAIN GUIDE	1			301
200	277-35002-01	PIN(ROCKER) CP	1	6DX46L		301
202	003-13050-00	CLIP	1	5DX11DX0.6T		301
220	277-36201-00	ROCKER ARM(IN) AY	1			301
225	277-36202-00	ROCKER ARM(EX) AY	1			301
230	014-90500-20	ADJUST SCREW	1	M5X0.5X23L		301
231	014-90500-20	ADJUST SCREW	1	M5X0.5X23L		301
240	017-00500-30	NUT	1	M5X0.5X4.1H		301
241	017-00500-30	NUT	1	M5X0.5X4.1H		301
290	011-00600-20	FLANGE BOLT	1	M6X1.0X14DX12L		301
310	277-30202-01	MUFFLER CP	1			301
315	277-37603-01	SPARK ARRESTER CP	1			301
317	015-00400-60	TAPPING SCREW	1	M4X6L		301
320	277-34502-01	MUFFLER COVER(1) CP	1			301
321	277-34601-01	MUFFLER COVER(2) CP	1	GENERATOR		301
340	277-35201-13	GASKET(MUFFLER)	1	T=0.2 26D 9DX58P		301
341	277-35201-01	GASKET CP(EXHAUST)	1	T=1.6 28D 8.5DX52P		301
350	980-20082-80	FLANGE NUT	2	M8X1.25X17DX7.5H		301
351	980-20082-80	FLANGE NUT	2	M8X1.25X17DX7.5H		301
360	011-00600-20	FLANGE BOLT	3	M6X1.0X14DX12L		301
405	277-34001-01	EXHAUST PIPE CP	1			301
415	010-50802-90	STUD	2	M8X1.25X30L		301
540	277-32902-J1	INSULATOR CP	1			301
550	277-35903-J3	GASKET2(INSULATOR)	1	T=0.5		301
560	277-35902-J3	GASKET1(INSULATOR)	1	T=0.5		301
570	002-38060-00	FLANGE NUT	2	M6X1.0X13DX6H		301
580	011-00600-50	FLANGE BOLT	1	M6X1.0X13DX20L		301
620	277-39001-01	BRACKET(A/C) CP	1			301
850	277-32762-08	BREATHER PIPE	1	8DX11DX95L		301
855	277-69001-03	SPONGE PROTECTOR	1			301

**FIG. 3      INTAKE and EXHAUST GROUP**

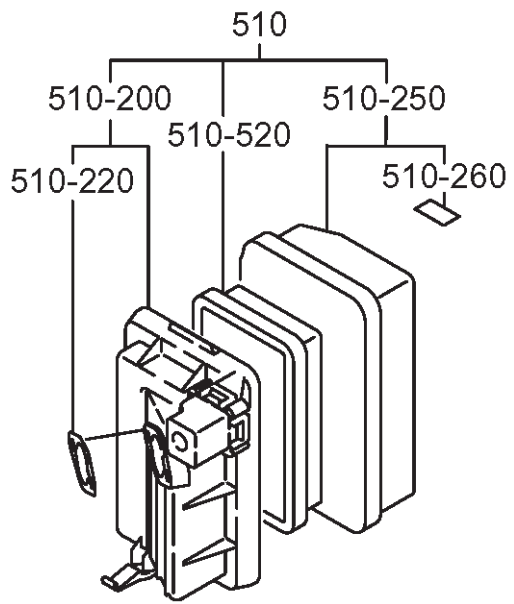




FIG. 4 GOVERNOR GROUP

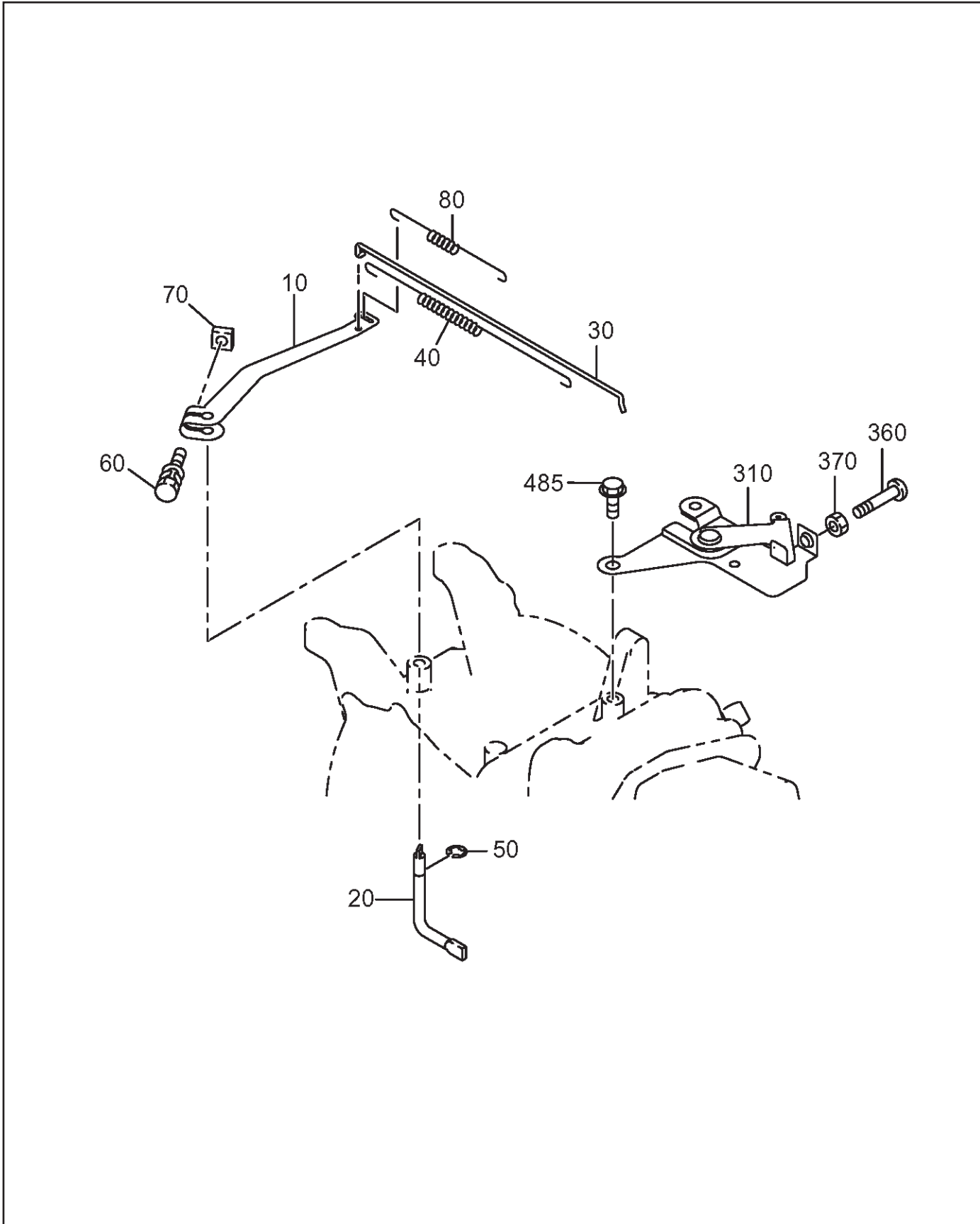
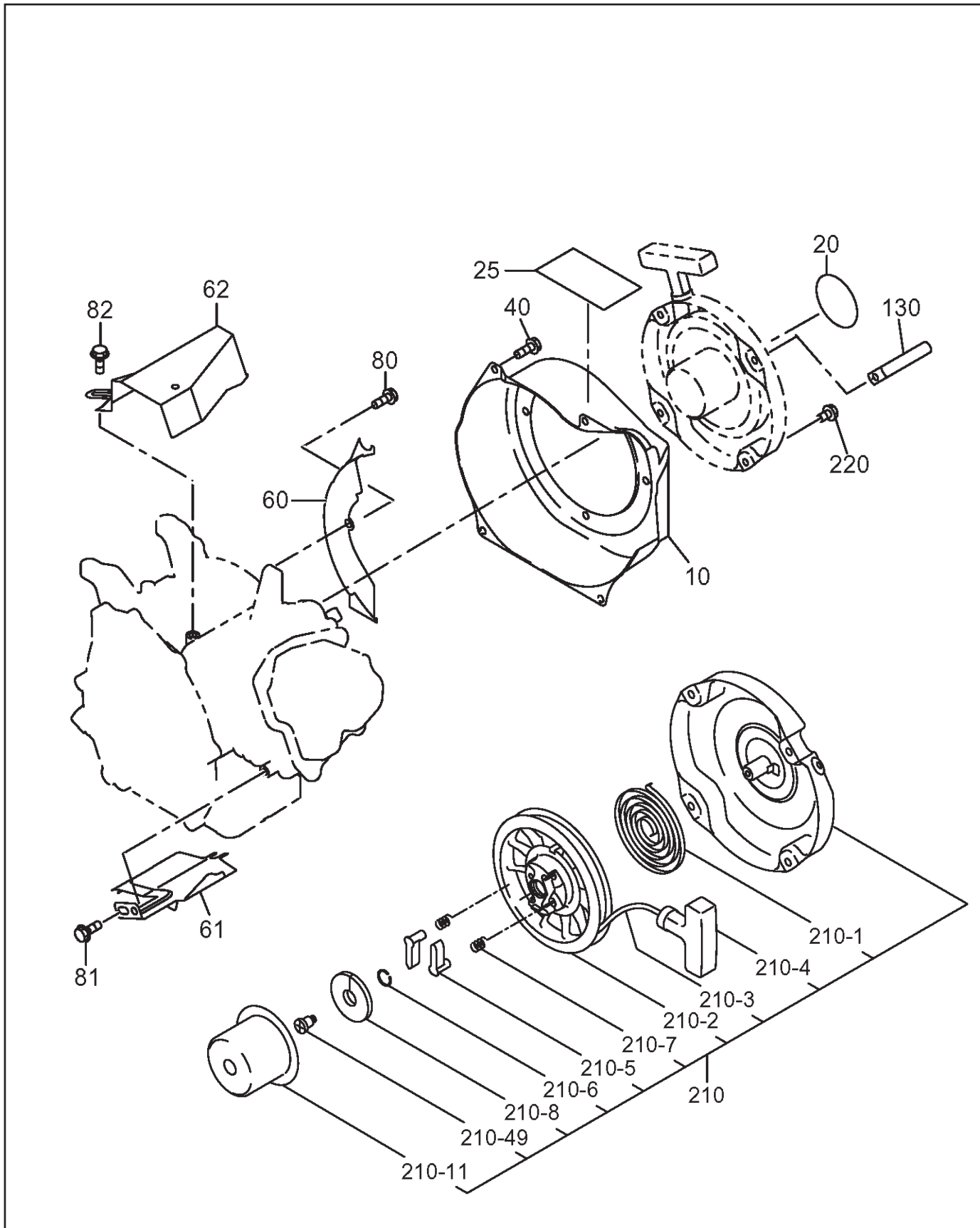


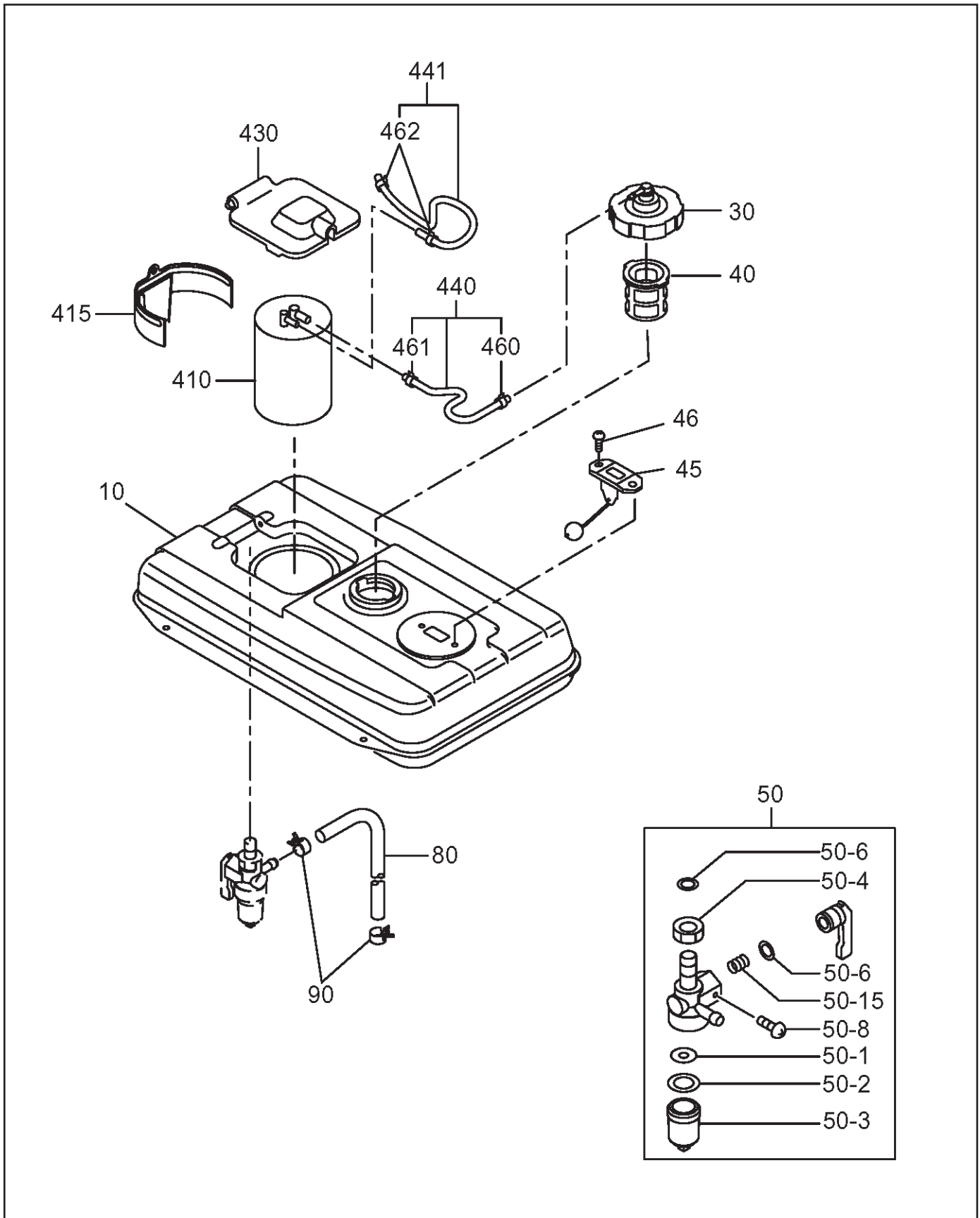


FIG. 5 COOLING and STARTING GROUP





**FIG. 6 FUEL LUBRICANT GROUP**







**FIG. 6 FUEL LUBRICANT GROUP**

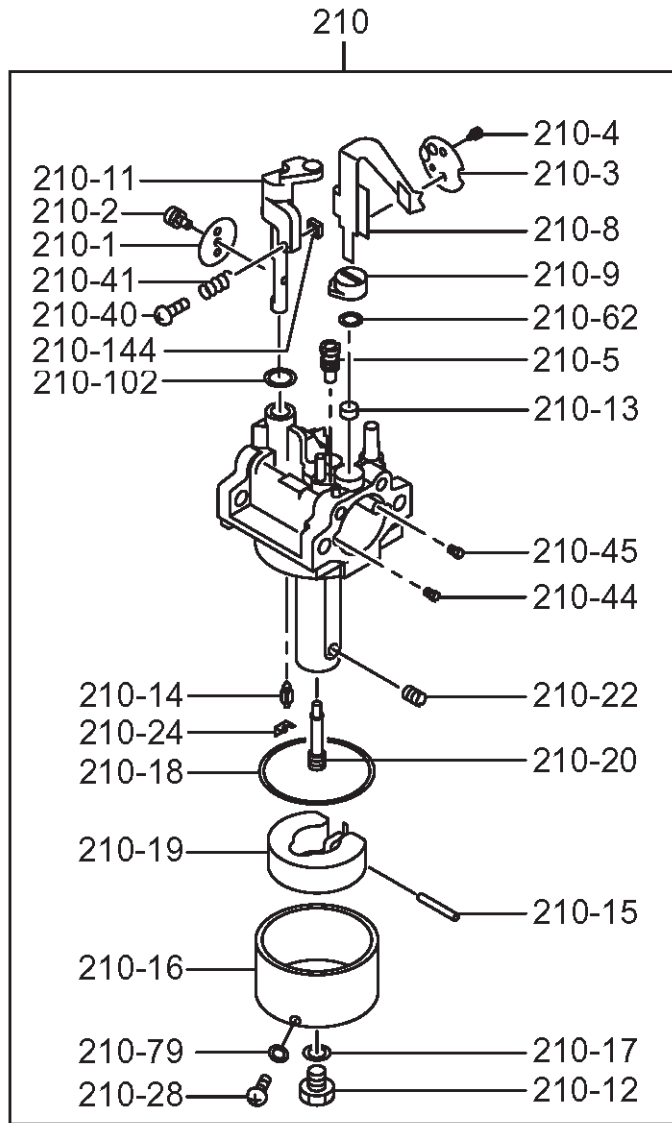




FIG. 7 ELECTRIC GROUP

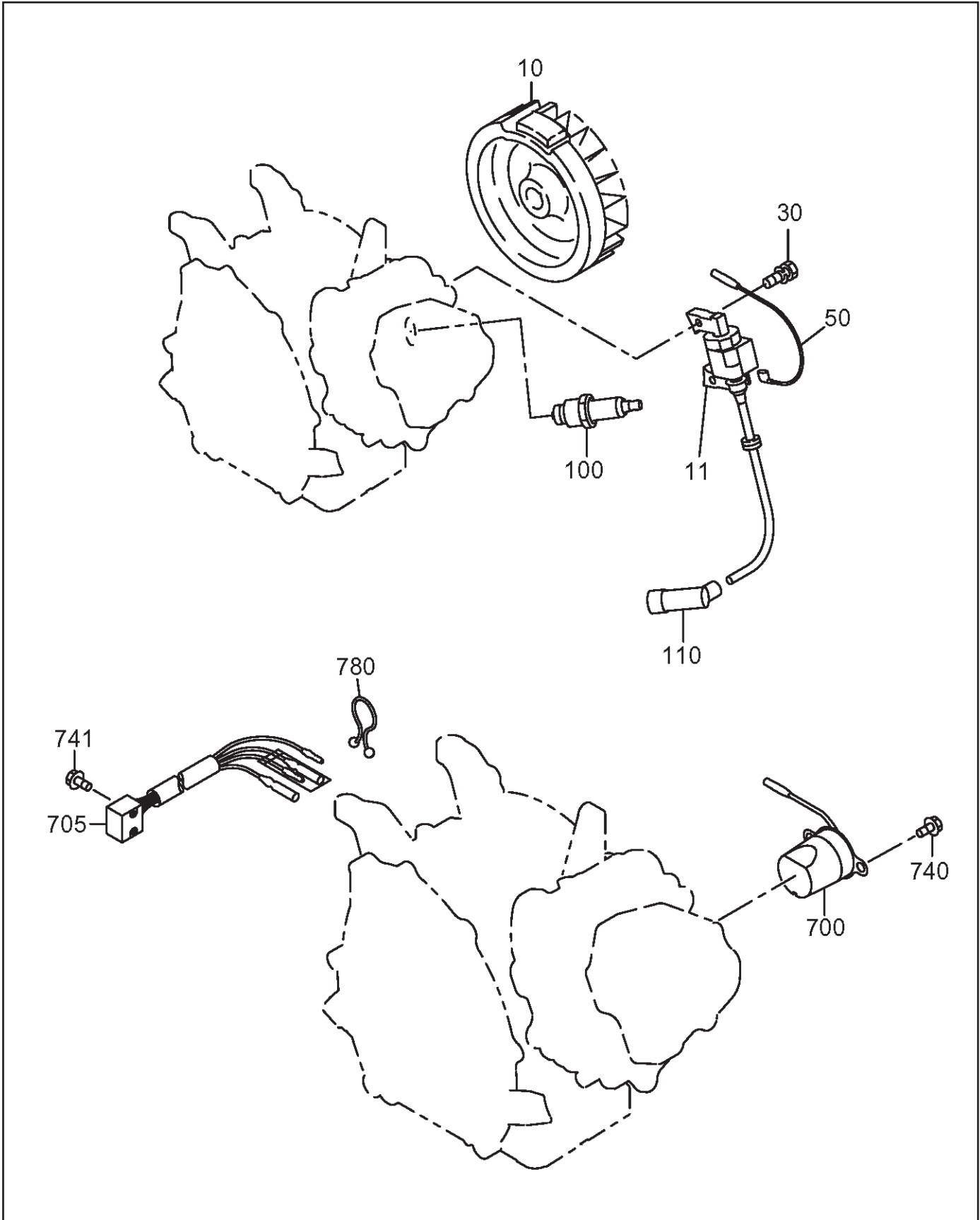




FIG. 22 GROUP

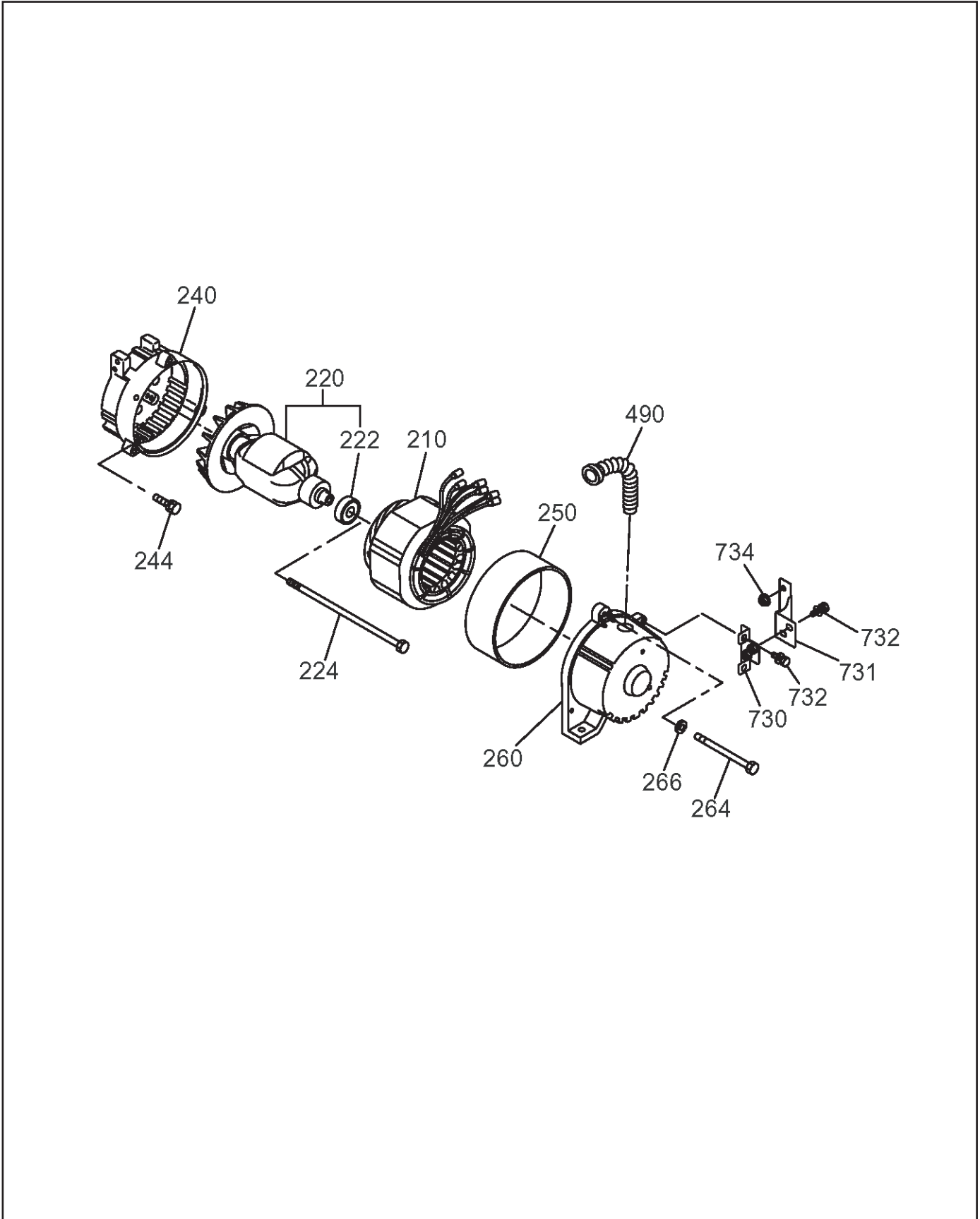




FIG. 23 GROUP

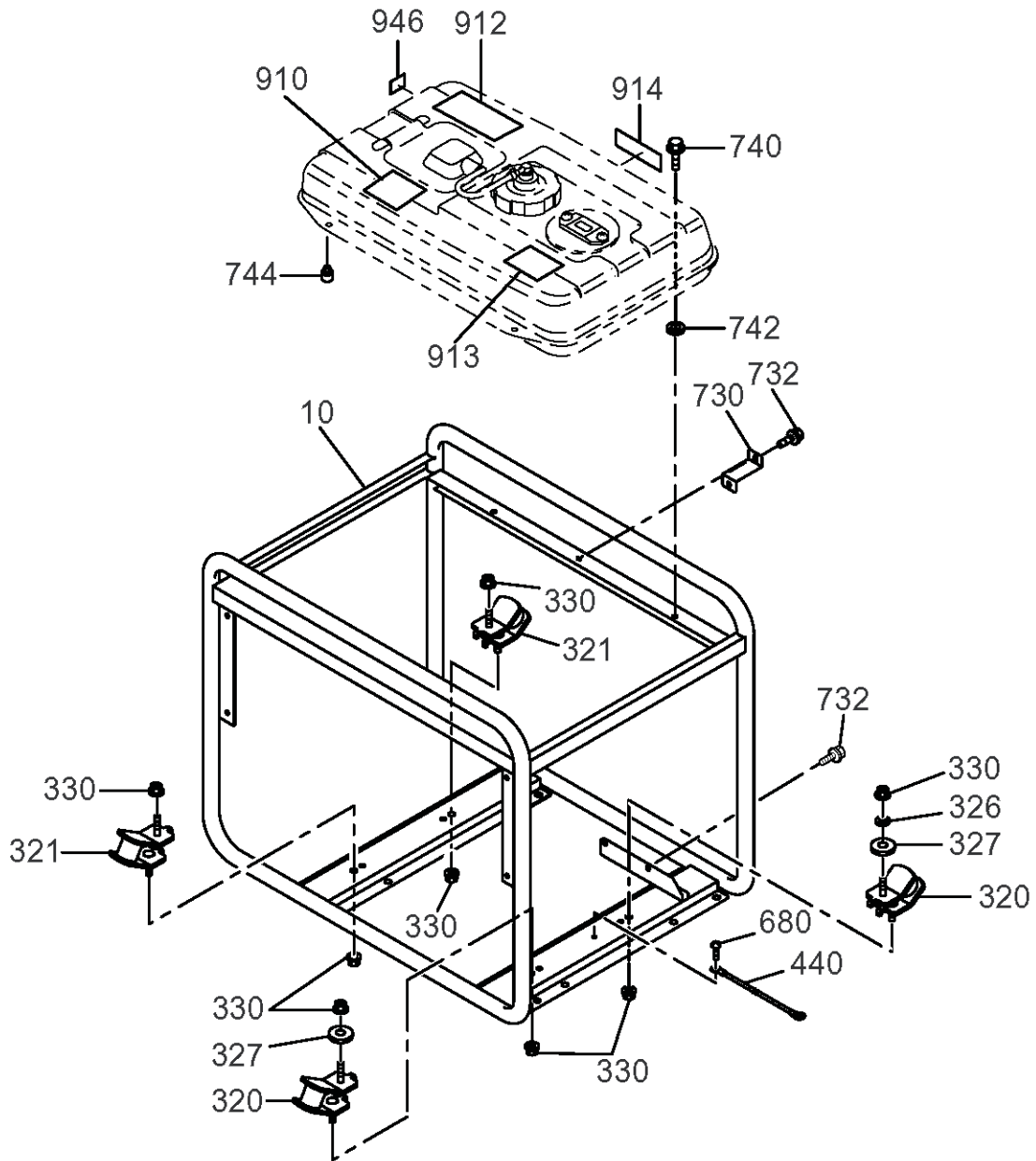
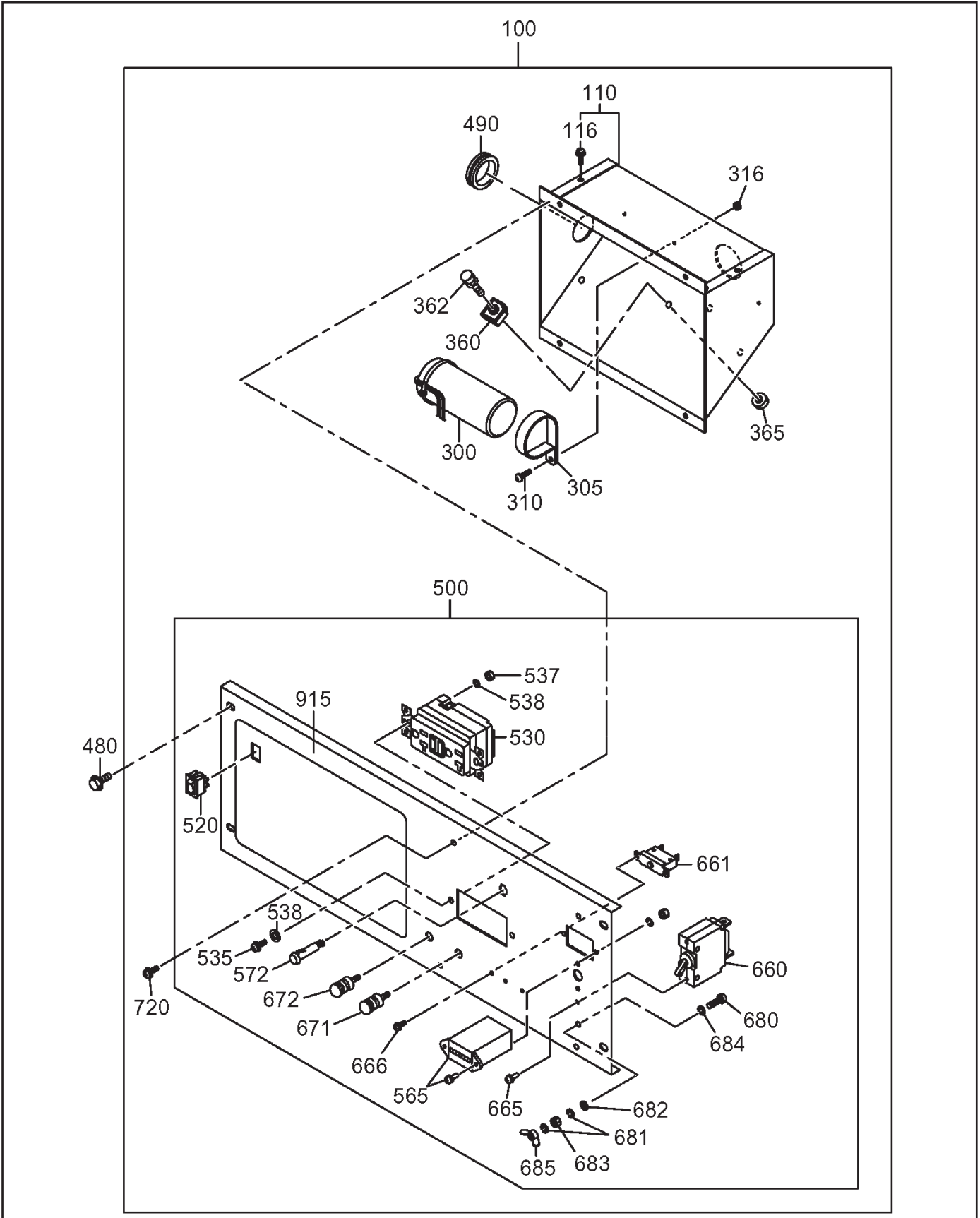






FIG. 24 GROUP





PRINTED IN THE USA

## Robin America, Inc

905 Telsler Road • Lake Zurich, IL 60047  
Phone: 847-540-7300 • Fax: 847-438-5012  
e-mail: [sales@subarupower.com](mailto:sales@subarupower.com) • [www.subarupower.com](http://www.subarupower.com)